



**User Manual**

**GENESIS**



SAFETY WARNINGS AND PRECAUTIONS	PAGE 5
BEFORE USING THE SYSTEM	PAGE 6
SYSTEM COMPONENT IDENTIFICATION	PAGE 7
POWER SUPPLY EXPLANATION	PAGE 8
GFCI SAFETY CORD EXPLANATION	PAGE 9
QUICK CONNECT DC CABLE EXPLANATION	PAGE 9
CUBE EXPLANATION	PAGE 9
INTRODUCTION	PAGE 10
SETTING UP THE SYSTEM	PAGE 11
USING THE SYSTEM	PAGE 15
CLEANING THE CUBE	PAGE 17
STAGES OF THE RING WEAR	PAGE 18
FULL BODY BATH & MAINTENANCE TIPS	PAGE 19
TROUBLESHOOTING	PAGE 20
SPECIFICATIONS	PAGE 21
WARRANTY	PAGE 22





## Safety Warnings and Precautions

**Read all safety warnings and precautions in full before operating the Genesis Hydrostimulation Unit. Be sure to follow all safety and operating instructions.**

### ALWAYS

1. Keep the Genesis power supply well away from water. (The Hydro-stimulation Unit comes with a 10-foot DC cable to ensure a safe operating distance.)
2. Place the Genesis power supply on a level, stable, dry surface.
3. Dry hands thoroughly before operating the Genesis power supply.
4. Use the Genesis Hydro-stimulation Unit in a well-ventilated area.
5. Unplug the power cord from the wall when unit is not in use.

### DO NOT

1. Operate the Genesis Hydro-stimulation Unit without the GFCI power cord supplied.
2. Allow children to operate the Genesis Hydro-stimulation Unit.
3. Handle the Genesis Hydro-stimulation Unit with wet hands.
4. Disassemble the Genesis power supply.
5. Place the Genesis power supply in water.
6. Attempt to repair or service the Genesis power supply unit yourself.
7. Replace fuses with ratings other than specified.
8. Use the Genesis Hydro-stimulation Unit for any purpose other than described in this manual.
9. Operate the Genesis power supply on a surface such as thick carpet where airflow under the unit would be restricted.
10. Operate the system during electrical storms.

DO NOT use extension cords. Also, should the Genesis Hydro-stimulation Unit ever become damaged in any way, disconnect and contact an authorized repairer.

## Before Using Your System for the First Time

Before using the Model Genesis Hydro-stimulation Unit for the first time, familiarize yourself with the components and controls. This will ensure that when you set up the system you will be able to follow the instructions confidently and correctly. Also, use this time to check that the system has arrived without any damage during shipping. Should you find any component damaged, contact your place of purchase immediately. Also it is important to become familiar with the restrictions placed on use of the system before continuing.

### Restrictions for Use of the System

1. Any individual that is pregnant or may be pregnant should not use the system.
2. Any individual that has transplanted organs should not use the system.
3. The system may only be used for a maximum period of 35 minutes per use.
4. The system may only be used every other day.
5. The water used by the system may only be used once (fresh water should be used for every session.)
6. Only one individual may use the system during any session.
7. DO NOT use any additives in the water other than those recommended in this manual.

### What Kind of Water Should be Used with the System?

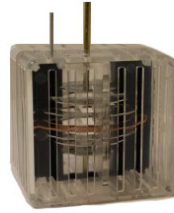
The system may be used with most types of water. Ordinary tap water is the most commonly used type of water. Distilled or reverse osmosis water is not recommended.

## System Component Identification

**Become Familiar with Each of the Individual Components of the System.**



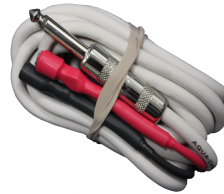
Genesis Power Supply



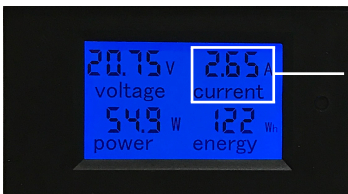
The Cube



GFCI Safety Power Cord



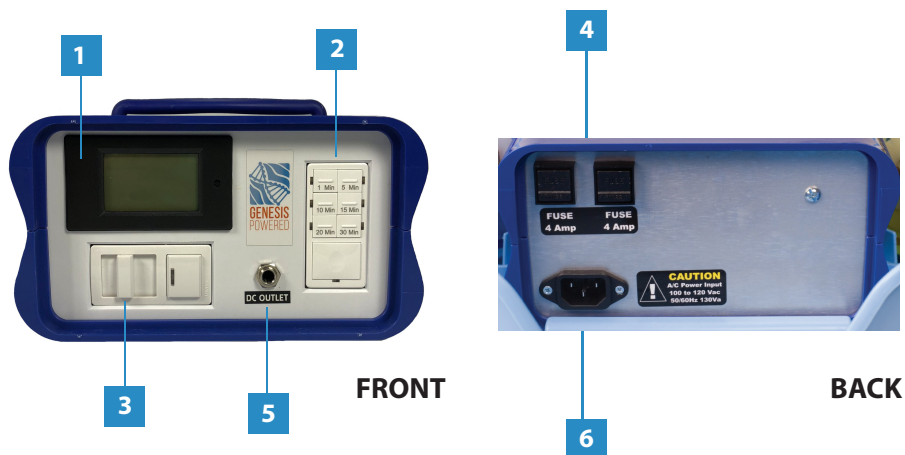
Quick Connect DC Cable



Power Display

This is the Amp or Current Display position. This is used to setup the unit for correct output.

## Model Genesis Power Supply Explanation



### 1. Power Display

The power meter measures and displays the amount of power (amperes or current) flowing to the Cube.

### 2. Timer

The timer is used to set the number of minutes for a session.

### 3. Power Control

The power control is used to turn the power supply on/off and lower the output power to the Cube.

### 4. Fuses

Located at the rear, the power supply has two replaceable fuses.

### 5. DC Outlet

The DC Outlet is where the Quick Connect DC supply cable plugs in.

### 6. AC Inlet

The GFCI safety cord plugs into the AC inlet.

## Model Genesis GFCI Safety Cord

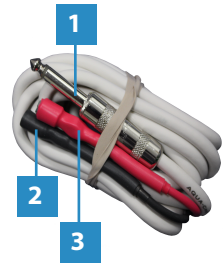
The GFCI\* power cord is a safety feature and should always be used with the Model Genesis Hydro-stimulation Unit. Ground Fault Circuit Interrupters (GFCI) – A UL Laboratories safety requirement.

1. Test Button
2. Reset Button
3. Power Indicator Light
4. Connector to Power Supply



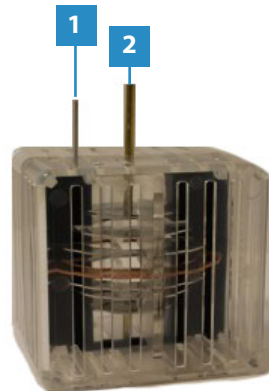
## Model Genesis Quick Connect DC Cable

1. DC Outlet Connector
2. Negative Cube Connector (black)
3. Positive Cube Connector (red)



## Model Genesis Cube Explanation

1. Replaceable Strip (Positive Connection)
2. Connecting Rod (Negative Connection)



The **Genesis** Hydro-stimulation Unit is a state of the art, bio-energy charger. The system is designed to operate with water because water is the basis of all biological functions. Water is also the medium through which all tasks in the body are performed. The body is made up of millions of smaller components, called cells, which are responsible for all the different biological processes that occur.

Even though there are many different types of cells in the body, they all have a number of things in common. They all need water for hydration AND energy to perform their designated tasks. With the depletion of either water OR energy, the cells are deprived and poor health can result.

The system works through the medium of water by making available extra energy that the living cell can utilize. There are many water sources around the world that are reported as having invigorating effects on the body when bathed in. These waters are naturally charged and give up some of their charge to the body on contact. This is the fundamental process utilized by the Genesis : the transference of energy through water.

**Possible Sensations** - When using the system you may notice a number of sensations that can vary for different individuals.

1. Various tingling sensations in parts of the body.
2. A shortness of breath during or towards the end of the session.
3. A slight discomfort in an unhealthy region of the body.
4. Tiredness.

These sensations generally only last a few minutes after the completion of the session.

If at any time during the session the need is felt to remove the feet from the footbath, the user should do so. You should wait 48 hours before attempting the footbath again.

**The Genesis Model Hydro-stimulation Unit does not diagnose, treat or cure any disease or condition; nor does it pull, push or force foreign toxins or materials from the body.**

## Setting up Your System for the First Time

### STEP 1

Place the Model Genesis power supply onto a stable, dry, level surface away from any water source. Before going to the next step.



### STEP 2

#### Connecting the GFCI Safety Power Cord.

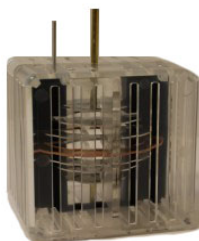
Plug the GFCI safety power cord into the AC inlet located at the rear of the power supply. Make sure the plug is pushed in all the way and is firmly in place.



### STEP 3

#### Connecting the DC Cable to the Cube

Connect the DC cable to the Cube using the two connectors on the end of the DC cable. One connector is red and the other is black. The red connector pushes onto the flat strip towards the outer edge of the Cube. The black connector pushes onto the round rod in the center at the top of the Cube. Make sure both connectors are pushed on firmly.



### STEP 4

#### Connecting the DC Cable to the Genesis Power Supply

Plug the DC cable into the outlet socket marked DC OUTLET on the front of the Genesis power supply.



### STEP 5

#### Testing the GFCI Power Plug

1. Plug GFCI into a grounded receptacle.
2. If light is not on, press reset button - light should come on.
3. Press test button - light must go OFF.
4. When test is completed press reset button again to use the equipment.



DO NOT USE THIS EQUIPMENT IF THE ABOVE TEST FAILS! If the GFCI passes the test, you may continue with the set-up.



## STEP 6

### Preparing the Footbath

Place the Cube into the footbath, now fill with warm water to 1/2 inch above the top of the Cube DO NOT ADD ANY SALT TO THE WATER AT THIS TIME! Place the footbath where it is going to be used. Make sure the footbath is placed on a flat, stable surface at least 7 feet from the power supply (for safe operation.)

The unit is now connected for operation.

## STEP 7

### Checking the Water for Correct Operation

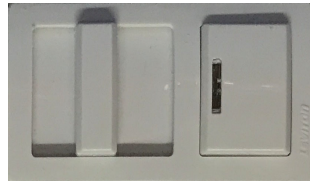
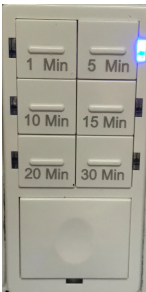
To check the water for correct system operation, the power to the unit has to be turned on. For correct operation, the power meter should display between 1½ (minimum) and 2½ Amps or A as shown on the power display.

## STEP 8

### Turning on the System

The power supply has two controls, the timer and the power control, and both have to be on for the system to work. The GFCI safety plug was tested in a prior step. Check that the light on the GFCI is illuminated so the power supply can be switched on. If GFCI light is not illuminated, return to step 5.

Slide the power control to MAX (to the Left.)



Push the 30 min button on the timer.

Now that the system is on, check the power display. To use the system properly, the display should read between 1½ (minimum) and 2½ (recommended.) If the display is correct, then setup is complete. Turn the unit off and continue to the user section. If the power display is displaying above or below the recommended setting 2½, then continue following the steps in this section.

## STEP 9

### Adjusting the Output of the System

Adjusting the output of the system is only required when the power meter displays above or below the recommended setting. The initial output of the system is determined by the conductivity of the water being used. When water conductivity is low, the output will be low, when water conductivity is high the output will be high.

**The system must be on to adjust the output.**

#### What to do if the Display is Higher than 2½

If the output on the display is more than 2½, the output will need to be lowered (to prevent damage to the unit). When the output is high, lowering is achieved using the power control. Slide the power control bar slowly to the right. The display will indicate a lower output the further the power control bar is moved to the right.



#### What to do if the Display is Lower than 1½

If the output on the display is lower than 1½, water conductivity is too low and needs to be increased. Increasing water conductivity increases the power output. To increase water conductivity, salt will need to be added to the water. Set the power control to the on max position and add a very small amount of the salt to the water. The water will need to be gently stirred. Once stirred, check to see if the display is within the recommended range.

Once the display reaches 2½, the system is ready to use. If the display is still below 1½, the output is still too low and the addition of the salt will need to be repeated until recommended output is achieved. Should you add too much salt, the water will become too conductive. If this occurs, dispose of the water and start over with fresh water.

**Operating above 2½ DOES NOT produce greater benefits to the user. Ring wear will be increased unnecessarily.**

## Using Your System for the First Time

Now set-up is completed - the system is ready to use. If during any session with the Genesis Hydro-stimulation Unit the user feels the need to remove the feet and quit the session they should do so.

### STEP 1

#### Choosing a Session Time for Adults

The recommended session time for adults is 30 minutes but may be used for 20 minutes. The session time requirement for each individual may be different. Most individuals only require a 20 minute session while others may prefer the full 30 minutes.

#### Choosing a Session Time for Children

Session times for children are as follows:

6 and under	NOT RECOMMENDED
7 – 12 years	15 – 20 minutes
13 – 17 years	20 – 30 minutes



### ALWAYS SUPERVISE CHILDREN DURING THE SESSION

### STEP 2

#### Set the Timer

Set the timer to the chosen session time.

## During the Session a Number of Rules Apply for the Proper Use of the System

**DO NOT** remove and replace the feet during a session.

**DO NOT** add more water.

**DO NOT** remove any water.

**DO NOT** turn the system off and back on again.

**DO NOT** remove the Cube from the water and place it back again.

**DO NOT** alter the output of the system during the session. **DO NOT** exceed the maximum recommended session time.

### STEP 3

#### Placing the Feet into the Water

Sit down in a comfortable position before placing the feet into the water.

At the end of the session, the unit will turn itself off.

### STEP 4

#### End of Session

Once the set time has elapsed, the system will turn off.

Once the session has ended, remove the feet from the footbath and dry them thoroughly. Dispose of the water used during the session in a responsible manner.

## Cleaning the Cube

Keeping the Cube clean and free from materials released by the water is important for optimum trouble-free operation. Cleaning of the Cube should be performed after each use.

The recommended cleaning procedure is to fully immerse the Cube into a cleaning solution. A most effective cleaning solution is CLR (Calcium, Lime & Rust remover.)

(You should first obtain a plastic container large enough to accommodate the Cube and cleaning solution.)



CLR MAY BE KEPT AND REUSED

### STEP 1

Rinse the Cube thoroughly under running water to remove any loose material.

### STEP 2

Place the Cube into chosen container. Pour CLR into the container until completely covered. Soak the Cube for 20 minutes. After 20 minutes remove the Cube, rinse and inspect to see if all material and staining has been removed. If staining is still observable place back into container for another 20 minutes. Repeat the process until clean. Once the Cube is completely clean rinse thoroughly with running water to remove cleaning solution.

### Cleaning Procedure Precautions

**DO NOT** leave the cube permanently in the cleaning solution. Damage to some metal components will occur. Such damage is not covered by warranty.

## Stages of the Ring Wear



### Stage 1

#### New Ring

The system is ready to use.



### Stage 2

#### Pitting

After some system use, the 2 replaceable rings will start to show some wear. Small holes or pits forming in the surface of the ring identify this wear.



### Stage 3

#### Jagged

This stage occurs after pitting and is called jagged. The rings will begin to lose their circular shape and start to become very rough around both the inside and outside edges.



### Stage 4

#### Replace

## Full body bath & Maintenance Tips

### Tips for Maintaining the DC Cable

When the Quick Connect DC cable is used only above the water as recommended, no maintenance is required. Some users prefer a higher volume of water when operating the system, thereby causing the DC cable connections to be submerged during operation. If the DC cable connections are used under water, then some maintenance is required. Just as the cube requires cleaning after use, so do the DC cable connectors. To clean the DC cable connectors, submerge only the red and black connectors on the end of the DC cable in the CLR cleaning solution used for the cube. Not cleaning these connections when used under the above mentioned conditions would result in poor or non-operation of the system. The DC cable is also subject to wear when used under water and will eventually need to be replaced.

### Tips for Maintaining the Cube

The Cube is an important part of the system, so keeping it clean and well maintained will result in efficient long-term operation. Inspecting the Cube regularly for signs of build-ups or deposits forming on the components is essential. If any build-ups or deposits are observed, the Cube is not being cleaned sufficiently. Many of these deposits can come from the water source being used and will need to be removed or the Cube will eventually cease to function. To remove these deposits, longer soaking in the CLR solution is required.

The Cube should also be inspected for any pitting forming in any of the permanent rings. The permanent rings are numbers 1, 3, 5 and 7. (The term pitting was identified earlier in this manual.) Pitting in these rings only occurs when a poor connection between them is formed or if they are dirty when the unit is being used.

During inspections, the Cube's two rods should also be checked. These rods may also be subject to pitting. If pitting is observed on these rods, it means that the Cube is being over-cleaned (i.e. left soaking in the CLR solution too long.)

### Using the System for the First Time After a Long Period of Storage

When the system is stored for a long period without use, the Cube and the DC cable connectors may be subject to oxidation. If this occurs on important contact points, it may cause either the Cube or DC cable to function poorly or not at all. To avoid this situation, the Cube and DC cable connections (red and black) should be soaked in the CLR cleaning solution to clean these contact points before the unit is used. It is also recommended that a new ring and strip set be installed to ensure proper operation.

### **Indicator light on the GFCI not coming on.**

Possible Cause: GFCI is not switched on. Power source outlet has no power. GFCI not functioning.

Action: Press the reset button on the GFCI. Try another power outlet. If light still fails to come on contact the manufacturer for replacement.

### **Indicator light on the GFCI is on but the power supply is not coming on.**

Possible Cause: GFCI power cord not plugged into power supply firmly. The timer is not turned on. Power control is switched off. Fuses are blown.

Action: Check to see if the GFCI power cord is plugged into the power supply firmly. Turn the timer on

Replace fuses with those of identical rating. If unit still fails to come on contact the manufacturer.

### **Power supply is on but no activity from the Cube. (Power display reading zero.)**

Possible Cause: Cube is not connected correctly. Loose Cube connection. Dirty or corroded DC cable. Insufficient water conductivity. Cable needs replacing.

Action: Check to see that the Cube is connected correctly. Check to see that the Cube connections are not loose. Clean DC cable Cube connectors (refer to Maintenance tips.) Increase water conductivity (refer to set up.)



### General

The **Genesis** Hydro-Stimulation Unit is designed and manufactured in the USA, The Model Genesis represents years of design experience in creating the safest and most reliable unit. The Genesis is well suited to the professional user with its advanced construction, reliability, and ease of operation. Features include a built in timer, variable output control and easy to read instrumentation. The Model Genesis has the highest level of safety features, which include:

1. Double fuse protection
2. Quick release DC connection
3. GFCI Safety technology
4. The Genesis is designed and built to comply with UL & CE mark requirements.
5. The GFCI Safety Feature: (A GFCI is a mandatory electrical safety device required for all portable spas as specified in the National Electrical Code Article 680.)
6. The GFCI for all Genesis units meets or exceeds the UL trip thresholds.

### Testing and Code Compliance

UL Standard 943 Class A GFCI

UL Recognized component (File #48380)

CSA Certified (LR-57811)



### Technical Information:

Model Genesis Power Supply

Input: 110 to 120 Vac 50/60Hz, 130W

Output: Isolated, rectified and filtered 24V DC @ 5.4Amps

Dimensions: 8½ (215mm)W x 8 (202mm)D x 5 (132mm)H

Weight: 6½ Lbs (2.9 kg)



## Warranty

The Manufacturer of the Genesis Model Hydro-stimulation Unit warrants to the original purchaser that the product will be free from defect in workmanship or materials for the below mentioned period for normal use as described in the User Manual included with the product at purchase.

The warranty begins upon purchase of the Model Genesis Hydro-stimulation Unit. To obtain warranty service, "proof of purchase" must be provided. A copy of a sales receipt or invoice, which clearly shows the date of purchase and place of purchase, is required.

The warranty period for Model Genesis Hydro-stimulation Unit is 1 year.

The manufacturer reserves the right to repair, and/or replace, and/or substitute any defective product with an equal or more current model (without charge for parts and labor.)

### THE WARRANTY DOES NOT COVER THE FOLLOWING

1. Product used for a purpose other than that described by the user manual.
2. Product that has been modified or repaired by anyone other than an authorized repairer.
3. Product that has been subjected to accident, misuse or abuse.
4. All accessory and consumable items including: positive ring & strip sets, the copper ring, fuses and DC cable.

The product warranty does not cover any shipping charges, nor does the warranty cover any damages that may occur during shipping. The manufacturer assumes no risk for loss or damage to shipment.

### HOW TO RECEIVE WARRANTY SERVICE

Before returning product for warranty service, authorization must be obtained. For authorization information, contact your place of purchase.



